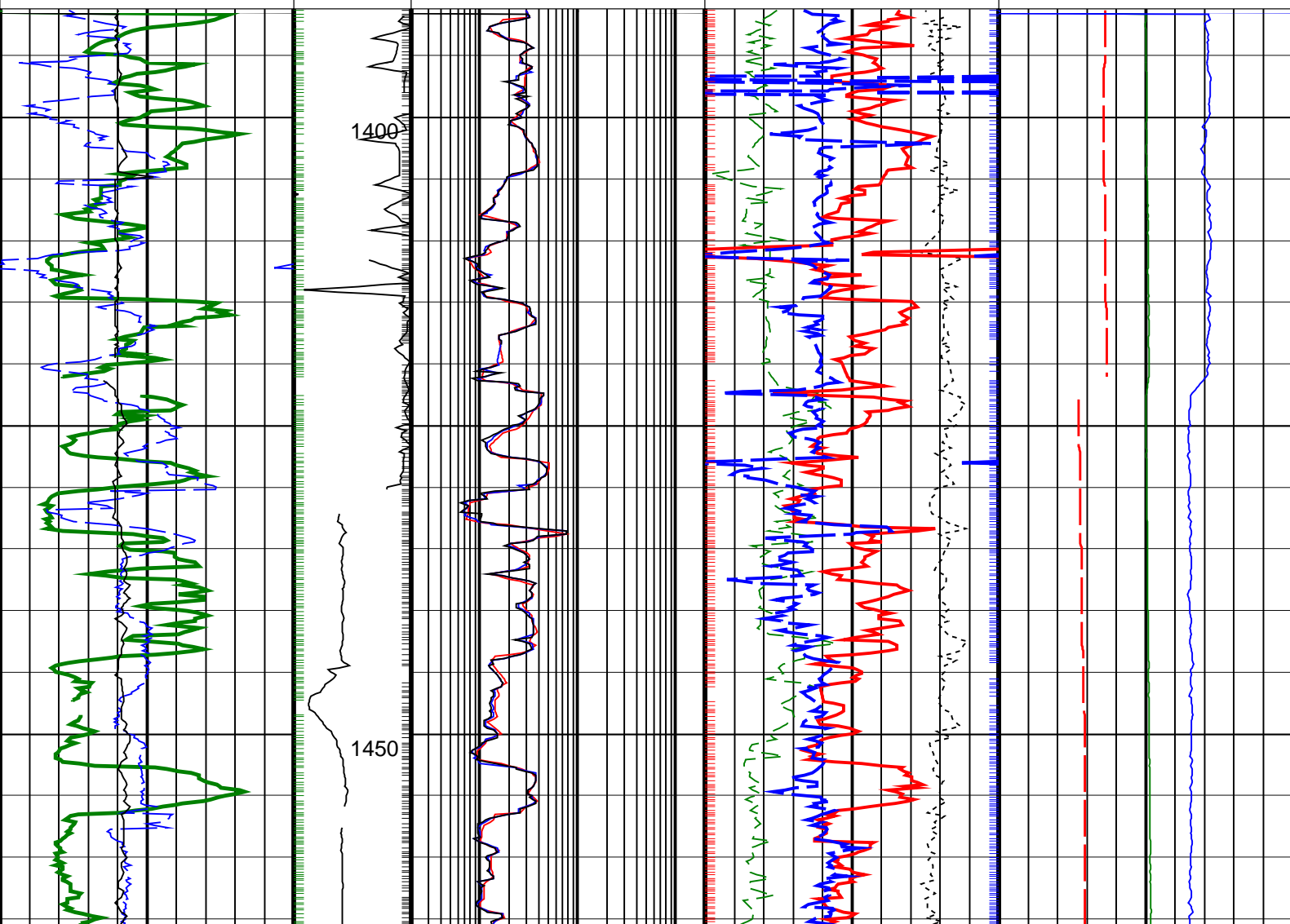
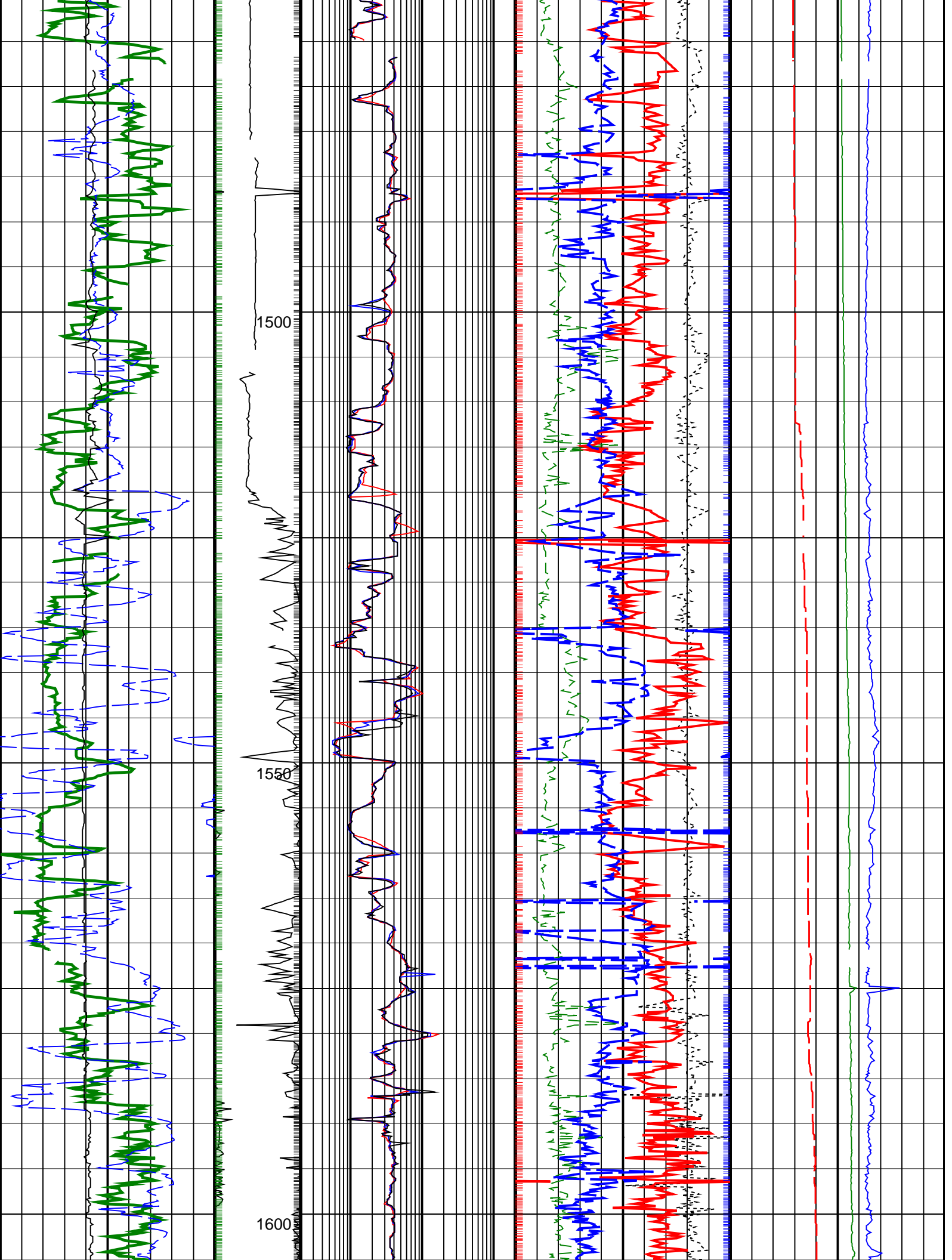


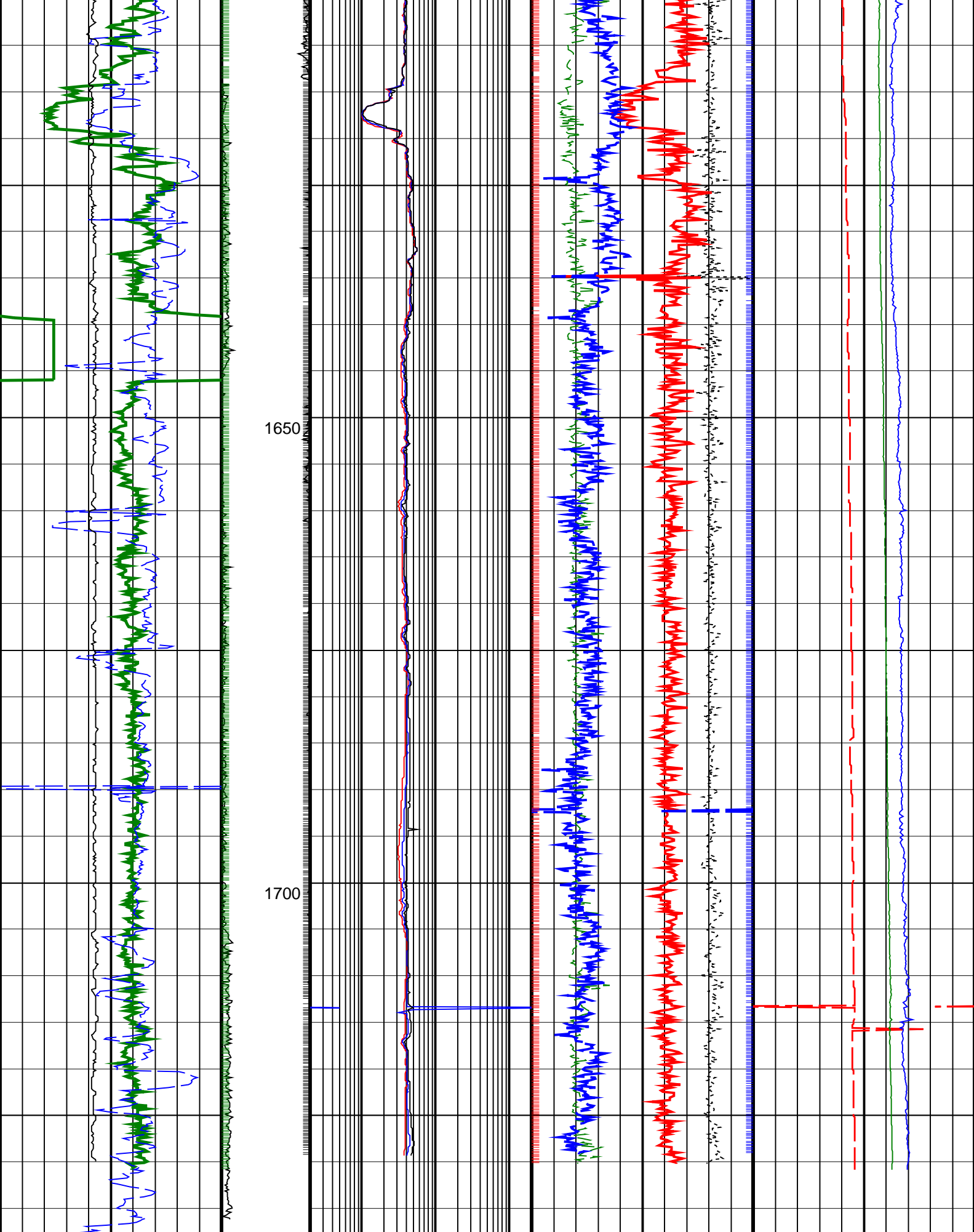
PIP SUMMARY

Density Samples +
 Gamma Ray Samples +
 Resistivity Samples +
 Neutron Samples +

<div>Gamma Ray, Average, Real-Time, Computed Downhole (GRMA_DH_ECO_RT)</div> <div>0 (GAPI) 200</div>		<div>Eco Uncorrected Phase Shift Resistivity 40 inch at 2MHz, Real-Time (P40H_UNC_DH_ECO_RT)</div> <div>0.2 (OHMM) 200</div>	<div>Thermal Neutron Porosity, Average, Real-Time (TNPH_ECO_RT)</div> <div>45 (PU) -15</div>		<div>Equivalent Circulating Density, Real-Time (ECD_ECO_RT)</div> <div>10 (LB/G) 15</div>
<div>Ultrasonic Caliper, Average Diameter, Real-Time, Computed Downhole (UCAV_DH_ECO_RT)</div> <div>6 (IN) 16</div>		<div>Eco Uncorrected Phase Shift Resistivity 28 inch at 2MHz, Real-Time (P28H_UNC_DH_ECO_RT)</div> <div>0.2 (OHMM) 200</div>	<div>Photoelectric Factor, Bottom, Real-Time, Computed Downhole (PEB_DH_ECO_RT)</div> <div>0 (---- 10</div> <div>Bulk Density Correction, Bottom, Real-Time Computed Downhole (DRHB_DH_ECO_RT)</div> <div>(G/C3) -0.25 0.25</div>	<div>Downhole Annulus Pressure, Real Time, Computed Downhole (DHAP_DH_ECO_RT)</div> <div>0 (PSI) 6000</div>	
<div>ROP*5 (ROP5)</div> <div>100 (M/HR) 0</div>	<div>MWD Collar RPM (CRPM_RT) (RPM)</div> <div>0 200</div>	<div>Eco Uncorrected Phase Shift Resistivity 16 inch at 2MHz, Real-Time (P16H_UNC_DH_ECO_RT)</div> <div>0.2 (OHMM) 200</div>	<div>Bulk Density, Bottom, Real-Time, Computed Downhole (ROBB_DH_ECO_RT)</div> <div>1.85 (G/C3) 2.85</div>		<div>Downhole Annulus Temperature, Real Time, Computed Downhole (DHAT_DH_ECO_RT)</div> <div>0 (DEGC) 200</div>







ROP*5 (ROP5) (M/HR)	MWD Collar RPM (CRPM_RT)	Eco Uncorrected Phase Shift Resistivity 16 inch at 2MHz, Real-Time (P16H_UNC_DH_ ECO_RT)	Bulk Density, Bottom, Real-Time, Computed Downhole (ROBB_DH_ECO_ RT)	Downhole Annulus Temperature, Real Time, Computed Downhole (DHAT_ DH_ECO_RT)
------------------------	--------------------------------	---	---	---

	0	200	0.2	(OHMM)	200	1.85	(G/C3)	2.85	0	(DEGC)	200
Ultrasonic Caliper, Average Diameter, Real-Time, Computed Downhole (UCAV_DH_ECO_RT)											
6 (IN) 16			0.2 (OHMM)	200		Photoelectric Factor, Bottom, Real-Time, Computed Downhole (PEB_DH_ECO_RT)	Bulk Density Correction, Bottom, Real-Time Computed Downhole (DRHB_DH_ECO_RT)			Downhole Annulus Pressure, Real Time, Computed Downhole (DHAP_DH_ECO_RT)	
						0 (---- 10	-0.25 0.25			0 (PSI)	6000
Gamma Ray, Average, Real-Time, Computed Downhole (GRMA_DH_ECO_RT)											
0 (GAPI) 200			0.2 (OHMM)	200		45 (PU)	-15		10	(LB/G)	15
<p style="text-align: center;">PIP SUMMARY</p> <p style="text-align: center;">Density Samples</p> <p style="text-align: center;">Gamma Ray Samples</p> <p style="text-align: center;">Resistivity Samples</p> <p style="text-align: center;">Neutron Samples</p>											
<p>IDEAL Version: ID11_0C_01</p> <p>IDEAL</p>											